

**PRODUCT DESCRIPTION**

The ARCUS gypsum cove is expertly crafted for application on inclined planes, commonly found in attic spaces or rooms with cathedral ceilings. This profile seamlessly aligns with either 1/2" or 5/8" gypsum panels. It contains a recessed LED channel that elegantly illuminates the periphery of the ceiling. Its design is compatible with a wide range of typical incline angles and offers the flexibility for fine-tuning through the use of drywall compound. Additionally, this gypsum cove can be treated with primer and painted, similar to standard wall surfaces.

**FEATURES**

- Architecturally designed shape in extruded polystyrene foam with high R-factor and fiberglass-reinforced exterior, finished in primable, paintable white plaster.
- Compatible with standard 1/2in. gypsum panels for flush installation, or adaptable with drywall mud for seamless integration with 5/8in. panels.
- Direct fit for the 84 and 85 profiles in ALCOA 6063-T5 aluminum alloy for superior heat dissipation
- Suitable for LED engines up to 14mm wide
- Sold in 8-foot (2.4m) sections.
- 5 Years warranty.



GYPSUM



Available in straight section of 8 feet  
(96 inches/2.4 m).

Light source sold separately from the Gypsum Profile

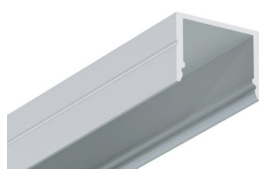
**Arcus Gypsum Cove**  
LCGYPSUM-CO-ARCUS

**SUGGESTED ALUMINUM PROFILE**

PROFILE



**Aluminum Profile 84**  
LCPROF-84



**Aluminum Profile 85**  
LCPROF-85

To see the complete specifications of the featured aluminum profiles, visit the products page at:

**Aluminum Profile 84:** <https://ledco.ca/en/products/led-strip-aluminum-profile-84>

**Aluminum Profile 85:** <https://ledco.ca/en/products/led-strip-aluminum-profile-85>