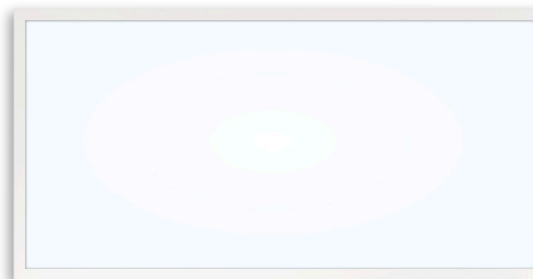


LCPAN-2X2-35W-MW-CCT-120V



LCPAN-2X4-50W-MW-CCT-120V

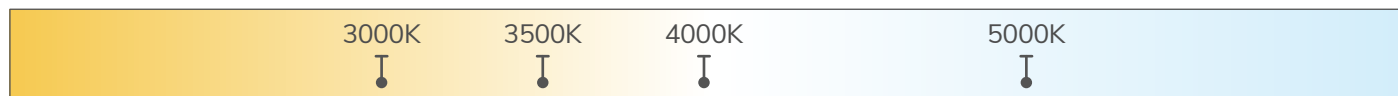


TECHNICAL SPECIFICATIONS

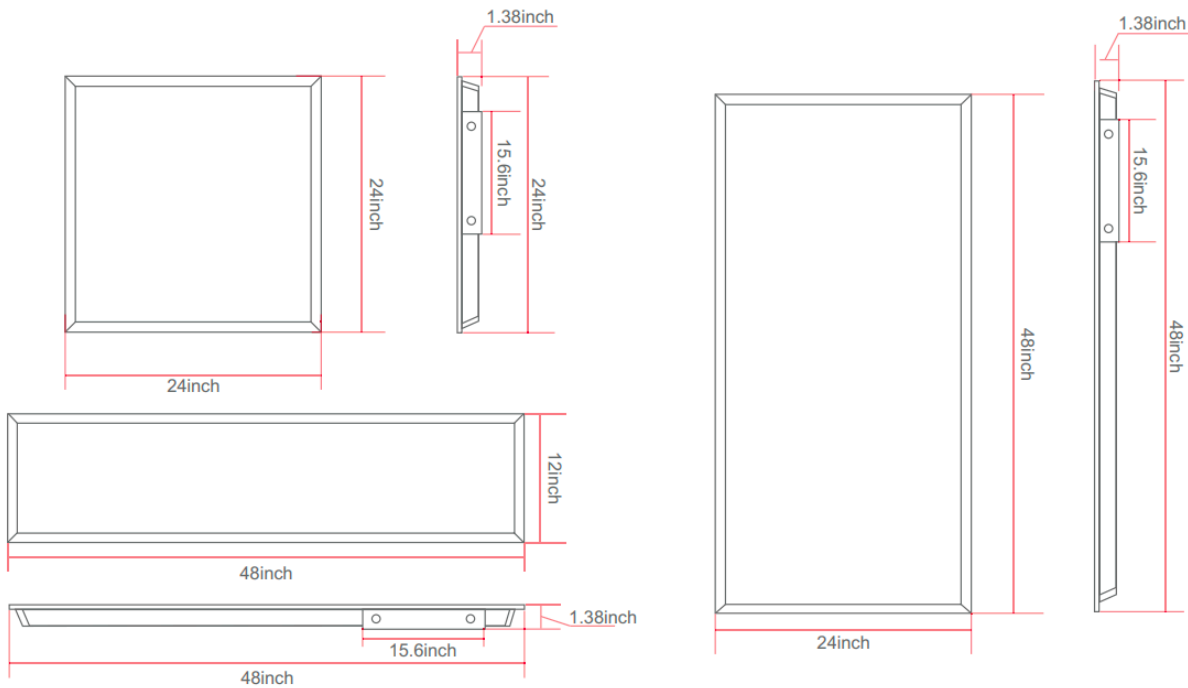
- cULus listed - 130lm/W
- Multiple Wattage and Multiple Kelvin (CCT)
- 3 convenient sizes (2' X 2', 2' X 4')
- No UV and IR emission
- 120V, PF >0.9
- L70 @ 54 000 Hrs
- CRI ≥80
- 0-10V Dimmable
- Aluminium body
- 100° + beam angle
- Damp location / IC rated
- 5-years limited warranty
- Operating temperature range -20°C ~ +50°C
- Suspension cables and surface mount frame optional

DIMENSIONS, WATTAGES AND TEMPERATURES

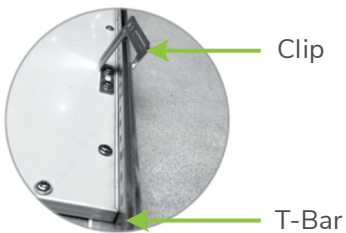
SIZE	MODEL NUMBER	LENGTH	HEIGHT	WIDTH	WATTAGES	KELVIN
2' X 2'	LCPAN-2X2-35W-MW-CCT-120V	24"	24"	1.38"	35-30-25W	3000-3500-4000-5000K
2' X 4'	LCPAN-2X4-50W-MW-CCT-120V	48"	24"	1.38"	50-40-35W	3000-3500-4000-5000K



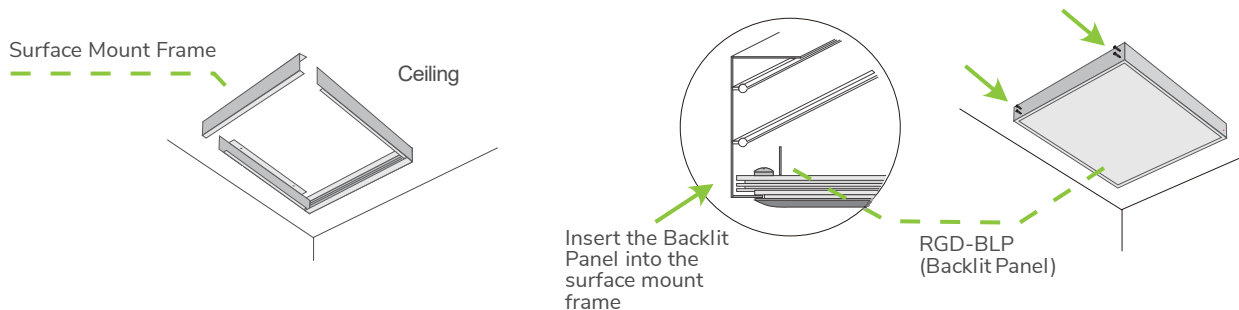
TECHNICAL DRAWING



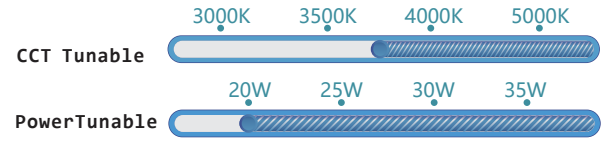
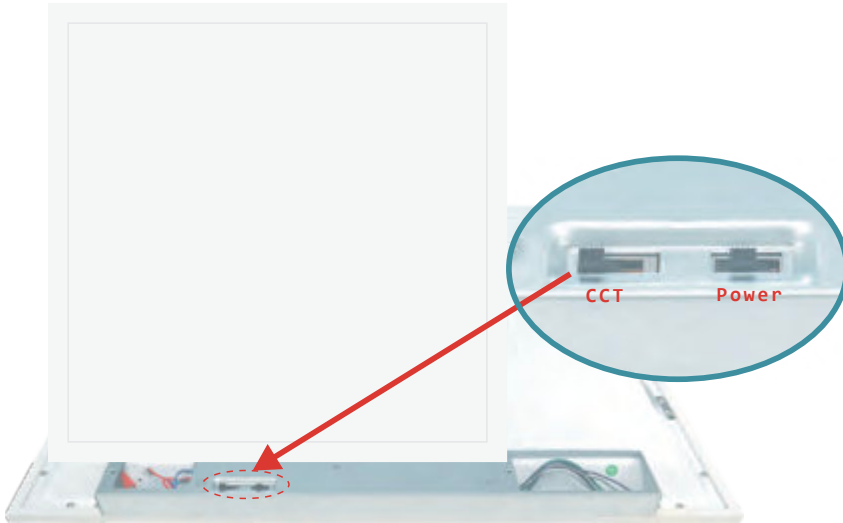
MOUNTING OPTIONS



For recessed grid ceiling installations, our mounting clips may be used to securely mount the RGD-BLP5 luminaire to the T-Bar frame or as to act as suspension points.

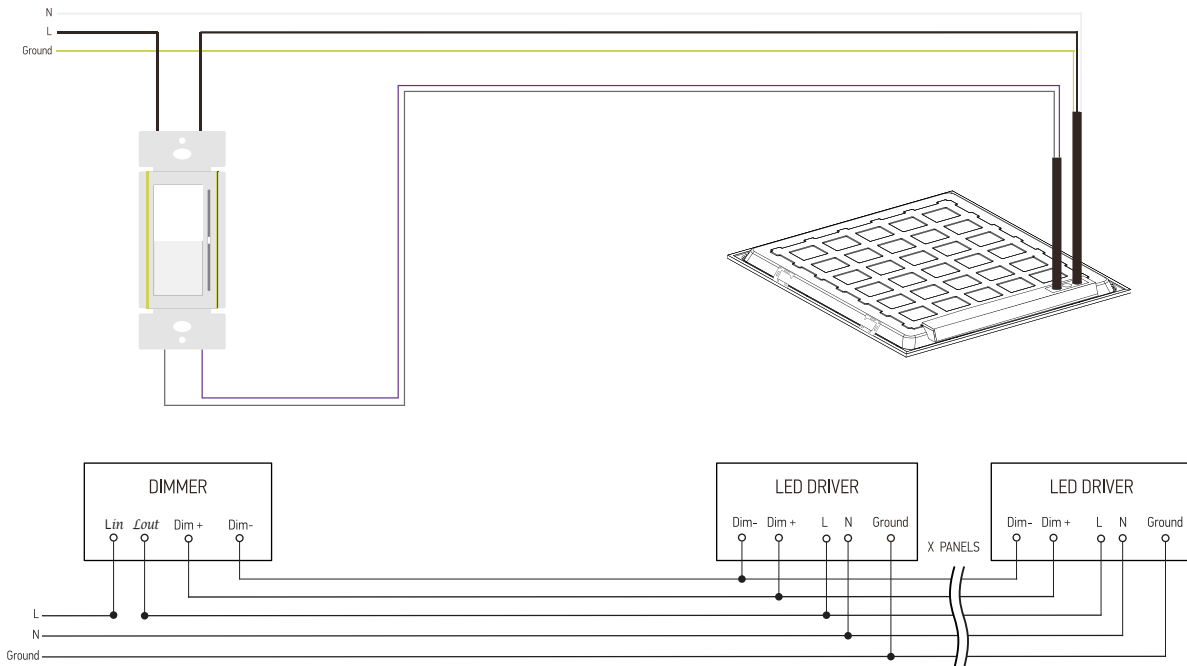


POWER & CCT BACK-LIT LED PANEL LIGHT SERIES



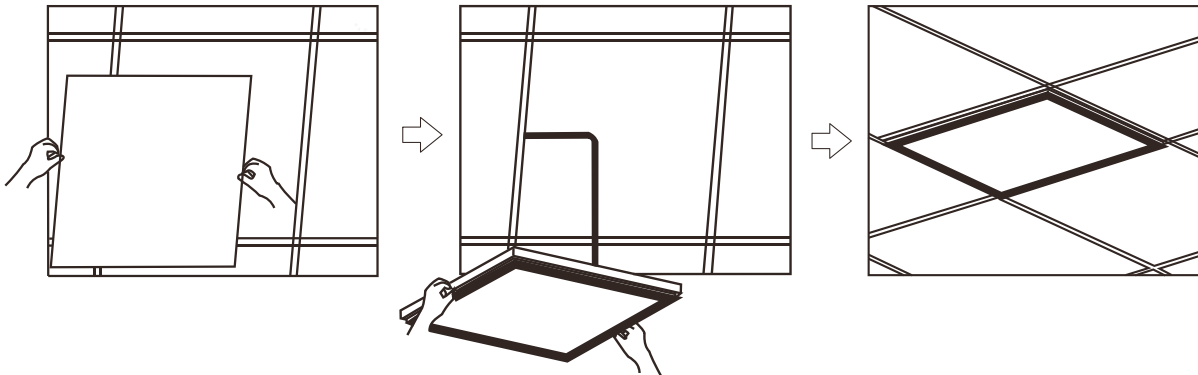
- 20W 3000K
- 20W 3500K
- 20W 4000K
- 20W 5000K
- 25W 3000K
- 25W 3500K
- 25W 4000K
- 25W 5000K
- 30W 3000K
- 30W 3500K
- 30W 4000K
- 30W 5000K
- 35W 3000K
- 35W 3500K
- 35W 4000K
- 35W 5000K

ELECTRICAL SCHEMATIC DIAGRAM

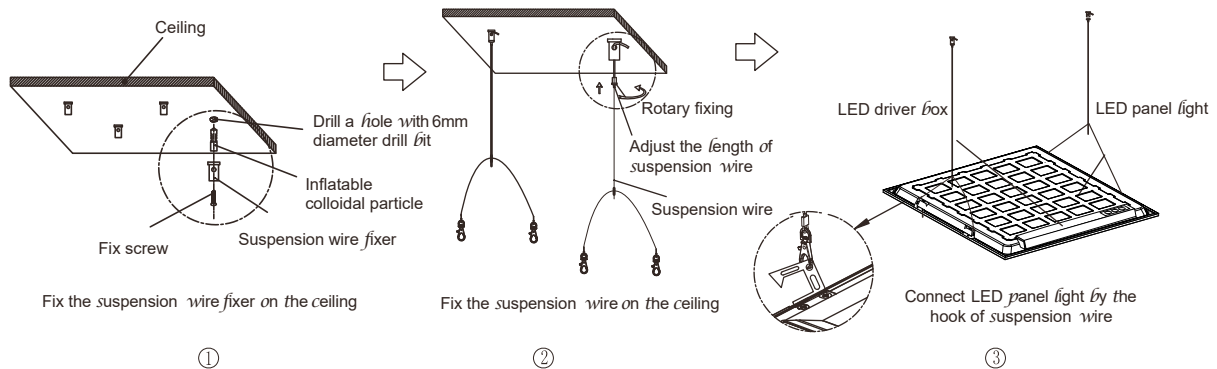


INSTALLATION INSTRUCTIONS

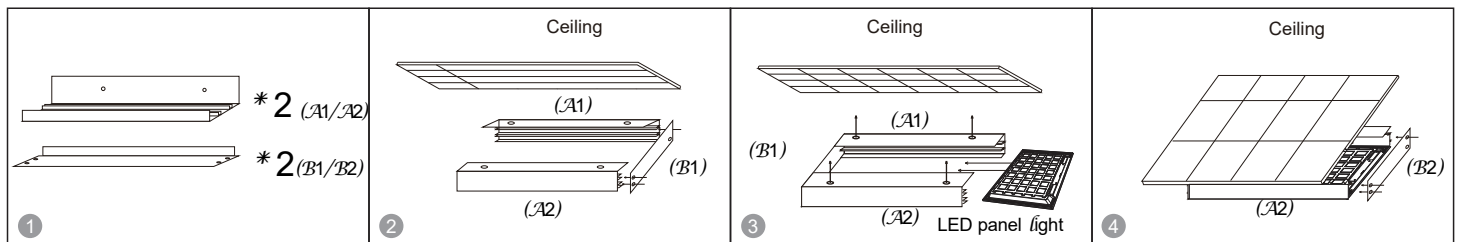
RECESSED MOUNTED INSTALLATION



SUSPENDING INSTALLATION



SURFACE MOUNTED INSTALLATION



1. Parts A1, A2, B1, B2;
2. First install A1, A2, and B1(as illustrated);
3. As is shown in the figure, fix A1 and A2 on the ceiling or on the roof, and then insert the Back-lit panel light directly (the end with power source enters later);
4. Install B2, finish installation.