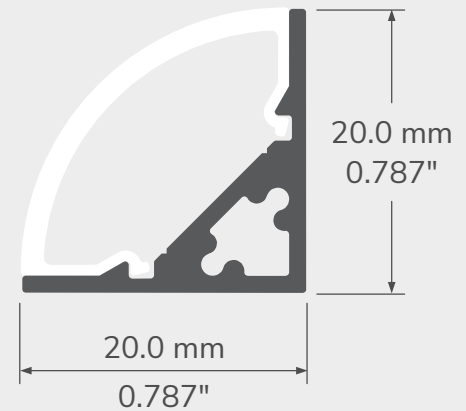




TECHNICAL DRAWING



WELL FOCUSED ON THE TASK!

Creating a visual impact has never been easier with our new 22 profile. Offering lighting without hot spots at a 45-degree angle from a corner, this series excels at maximizing appeal of the products in POP stands while maintaining a minimalist style. This profile includes a long lens fitting system to maximize its long term durability.



FEATURES

- Offers lighting with a beam oriented at 45 degrees.
- Designed to give a uniform light without hot spots*
- Custom length by sections of 2 to 192".
- Application guide for 10mm (3/8-inch) LED engine or less.
- Made of ALCOA 6063-T5 aluminum alloy increasing heat dissipation.
- Its use increases the lifetime of your LED engine.
- New enhance mechanical fit for the lens.

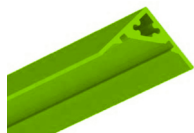
PROFILE



22 - Profile, alu



22BK - Profile, black



22CS - Profile, custom color

LENSES



PR - Prime lens



OX - Optiflex lens



BK - Black lens

MOUNTING HARDWARE



45 - 45° corner bracket



Mounting tape, double face

LENGTH

Custom length by sections of 2 to 192 inches (5m).

