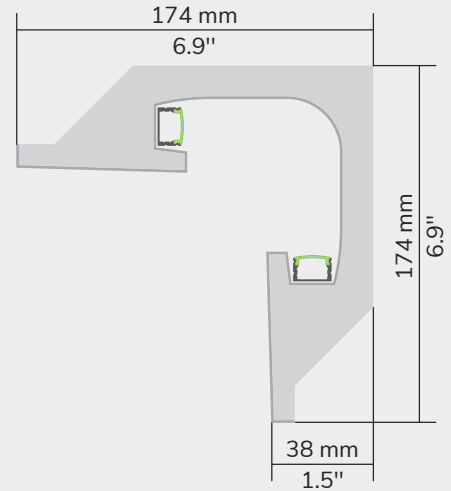




TECHNICAL DRAWING



PRODUCT DESCRIPTION

The GEMINUS gypsum cove is expertly designed to craft corner niches featuring a 2-inch broad aperture, delivering balanced illumination from both flanks, thus enhancing the linear lighting impact. Precisely compatible with 1/2-inch gypsum panels, it also seamlessly adjusts to 5/8-inch variants, maintaining the simplicity and efficiency characteristic of other Gypsum Series profiles. Additionally, this gypsum cove can be treated with primer and painted, similar to standard wall surfaces.

FEATURES

- Architecturally designed shape in extruded polystyrene foam with high R-factor and fiberglass-reinforced exterior, finished in primable, paintable white plaster.
- Compatible with standard 1/2in. gypsum panels for flush installation, or adaptable with drywall mud for seamless integration with 5/8in. panels.
- Direct fit for the 84 and 85 profiles in ALCOA 6063-T5 aluminum alloy for superior heat dissipation
- 2 aluminum profiles can be fit
- Suitable for LED engines up to 14mm wide
- Sold in 8-foot (2.4m) sections.
- 5 Years warranty.



GYPSUM



Available in straight section of 8 feet
(96 inches/2.4 m).

Light source sold separately from the Gypsum Profile

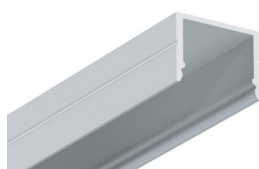
Geminus Gypsum Cove
LCGYPSUM-CO-GEMINUS

SUGGESTED ALUMINUM PROFILE

PROFILE



Aluminum Profile 84
LCPROF-84



Aluminum Profile 85
LCPROF-85

To see the complete specifications of the featured aluminum profiles, visit the products page at:

Aluminum Profile 84: <https://ledco.ca/en/products/led-strip-aluminum-profile-84>

Aluminum Profile 85: <https://ledco.ca/en/products/led-strip-aluminum-profile-85>