

TECHNICAL SPECIFICATIONS

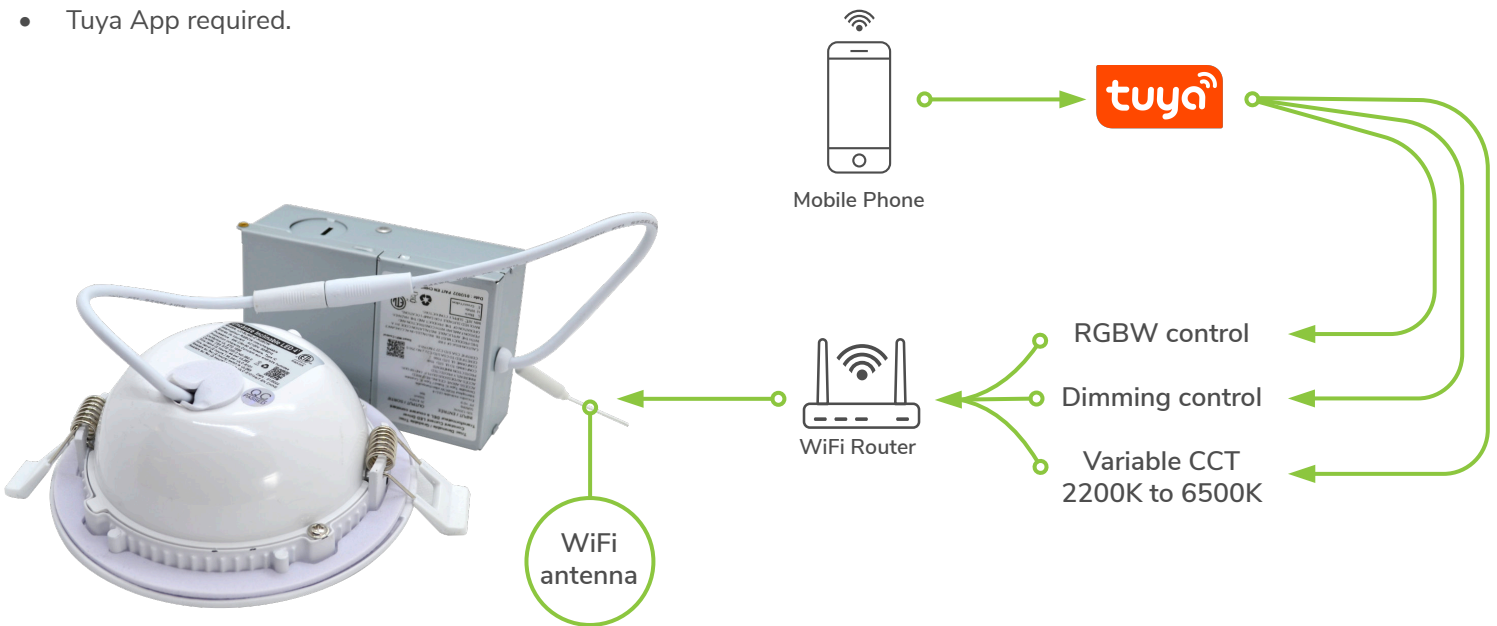
- | | | | |
|-------------------|----------------------------|-----------------------|-------------------|
| • Lumens | : 792 LM | • IC Rated | : Type IC Rated |
| • Color Type | : RGBW | • Location Approved | : Damp Location |
| • CCT color Temp. | : Variable, 2200K to 6500K | • Certification | : cETLus |
| • Beam Angle | : 40° | • Lifespan | : 50,000hrs |
| • CRI | : >80 | • Warranty | : 3 years |
| • Input Voltage | : 120VAC | • Panel Diameter | : 4.25" - (108mm) |
| • Power | : 9W | • Panel Depth | : 1.75" - (45mm) |
| • Power Factor | : >0.9 | • Junction Box Length | : 4.25" - (108mm) |
| • Trim color | : White | • Junction Box Width | : 2.4" - (60mm) |
| • Dimming | : Dimmable by Tuya App. | • Junction Box Height | : 1.375" - (35mm) |

PRODUCT NUMBERS

White : LCDL-DLG4-RGBW-9W-WH

RGBW COLORS AND CCT COLOR TEMPERATURE SETTINGS

- 2.4Ghz WiFi router required.
- Tuya App required.



VARIABLE CCT TEMPERATURE SETTINGS

WARM

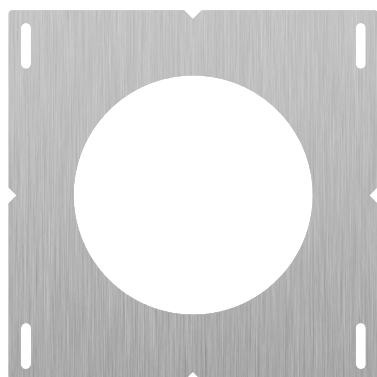
COLD



COMPATIBLE DIMMERS

BRAND	MODEL	DIMMING FUNCTION
Lutron	S-603P	DIMMABLE
Leviton	6633-P	DIMMABLE
Leviton	1C33L1	DIMMABLE
Lutron	CTCL-153P	DIMMABLE
Lutron	TG600P	DIMMABLE
Lutron	DV600P	DIMMABLE
Lutron	LG600P	DIMMABLE
Lutron	SCL-153P	DIMMABLE
Lutron	MAW-600	DIMMABLE
Lutron	MS-VP600G	N/A
Lutron	LGCL-153P	DIMMABLE
Lutron	7SCL-153P	DIMMABLE
Lutron	600PH	DIMMABLE
Lutron	DV-600P	DIMMABLE
Lutron	6838	DIMMABLE
Lutron	CTELV-303P	DIMMABLE
Lutron	CTCL-153PD	DIMMABLE
Leviton	6674	DIMMABLE

MOUNTING PLATES



4 inch plate (LCPLATE-4)